

Meet Your Neighbors: A Snapshot of the Raceland Community

Community at a Glance



70,825

People

Total population within the 20-minute drive-time radius.



43.7 Years

Median Age



\$54,603

Median Household Income

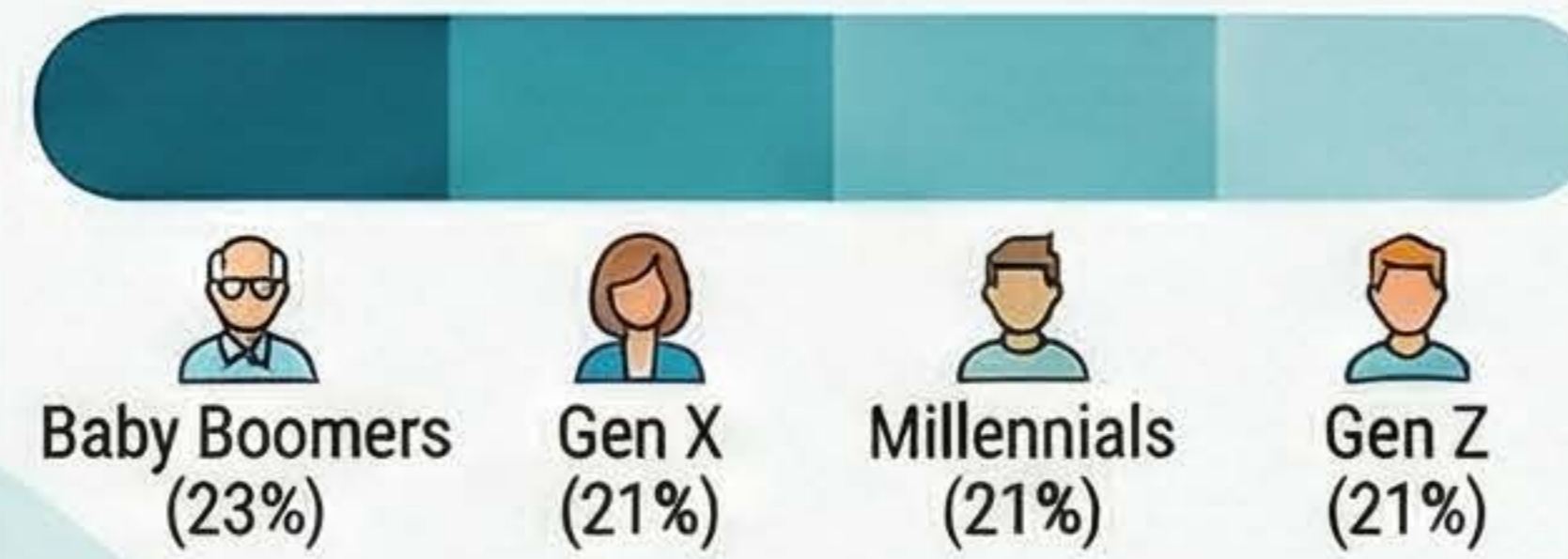


2.4 People

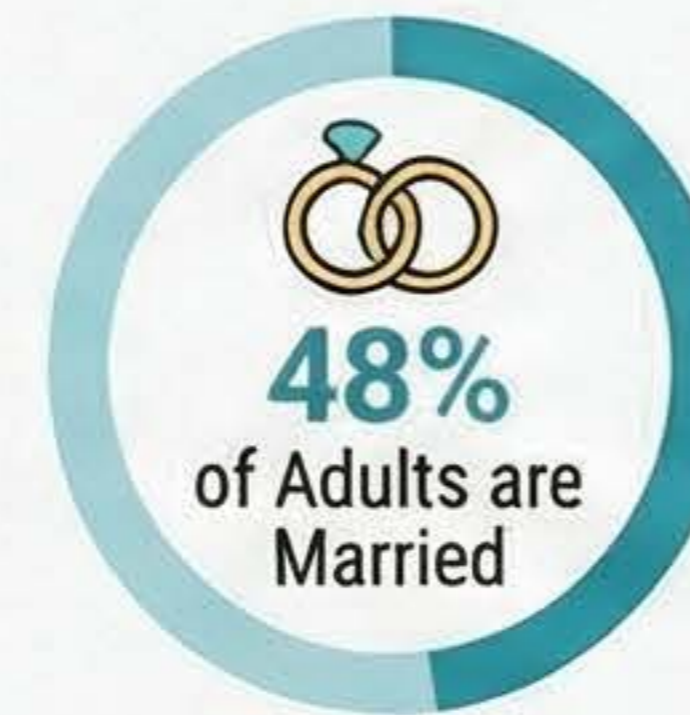
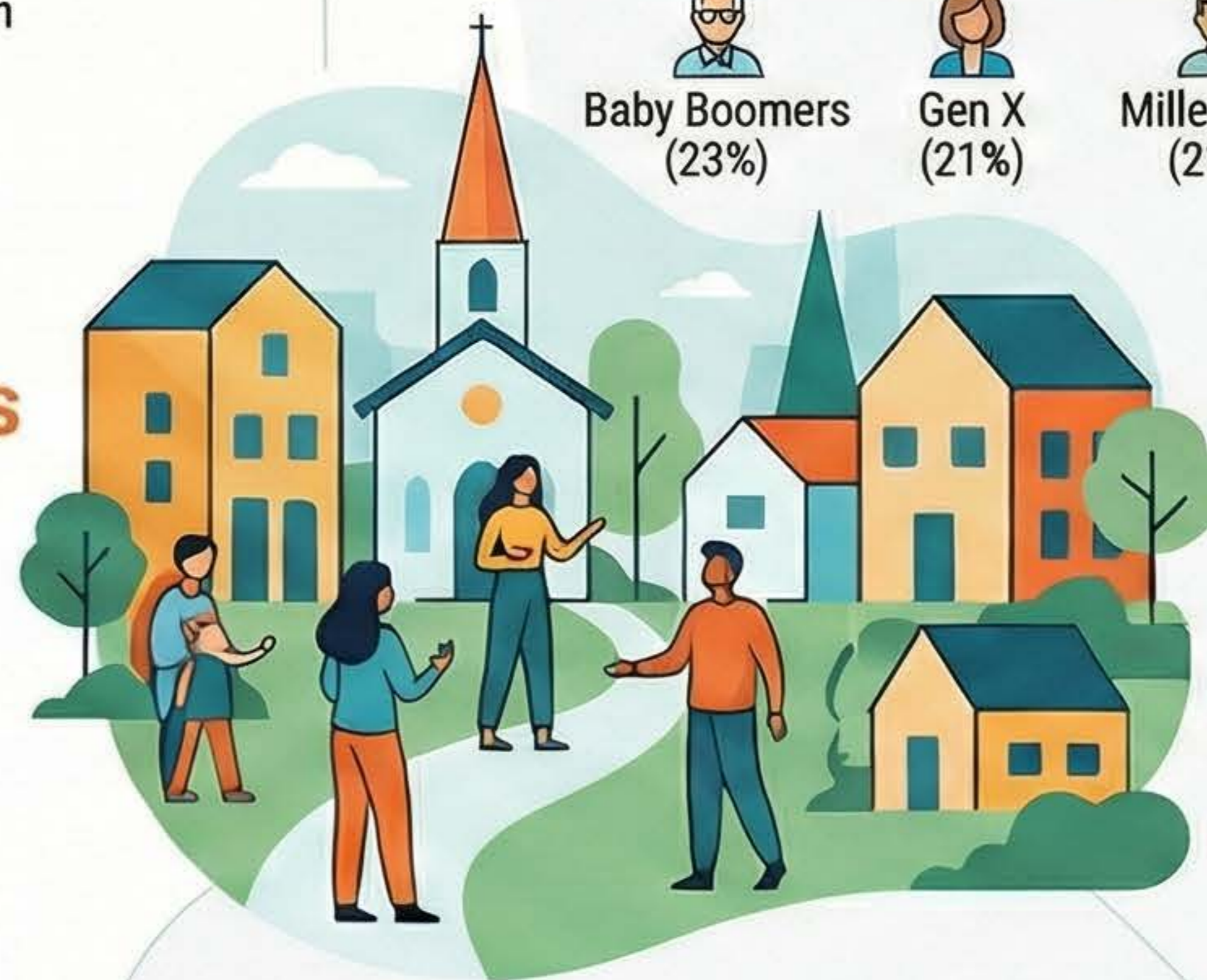
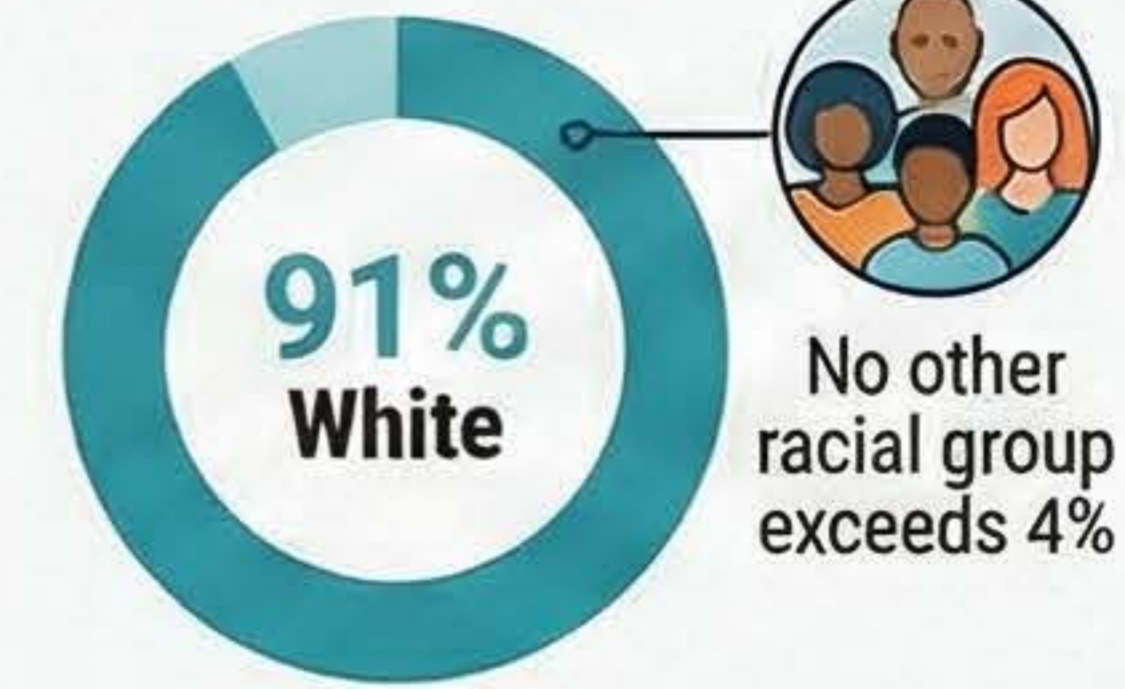
Average Household Size

The People of Raceland

Balanced Generational Mix

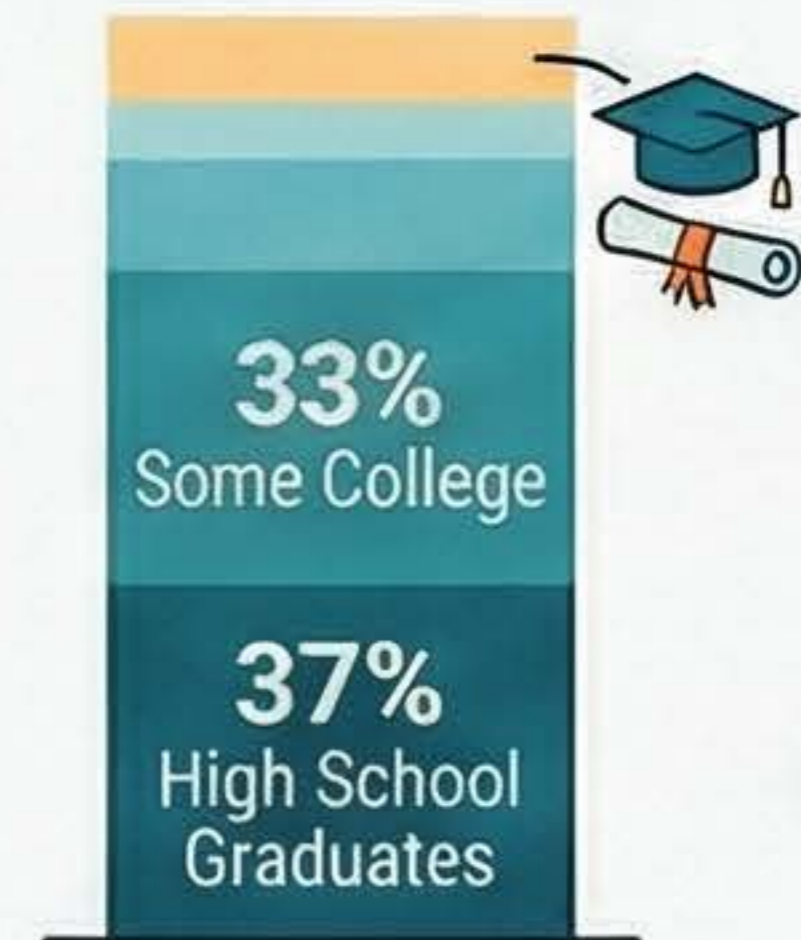


Racially Homogeneous Community

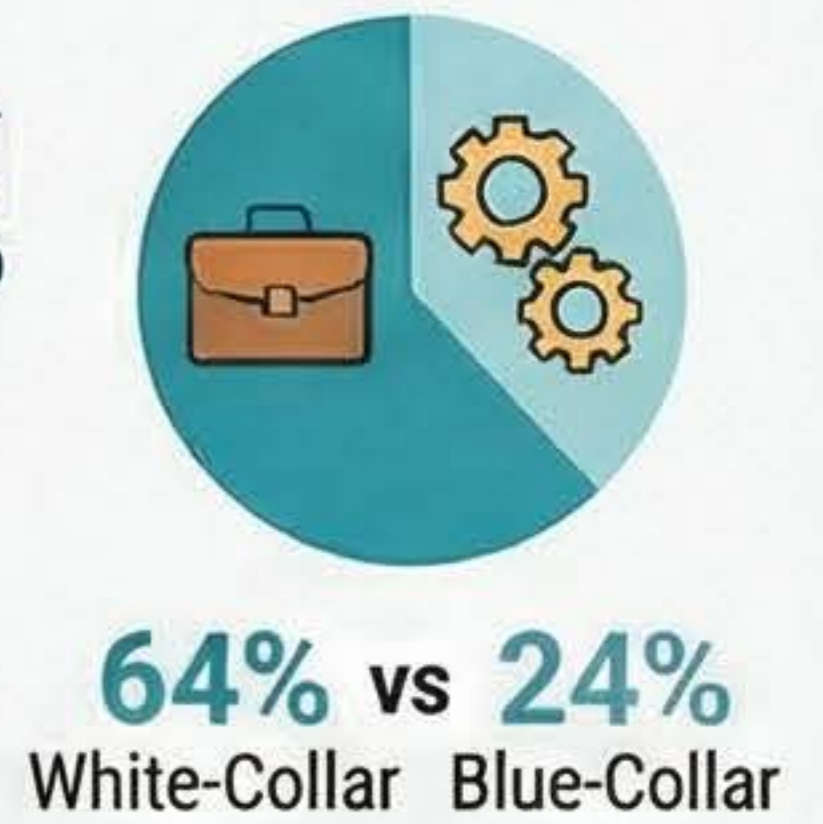


Livelihood & Education

Majority Have a High School Diploma or Some College



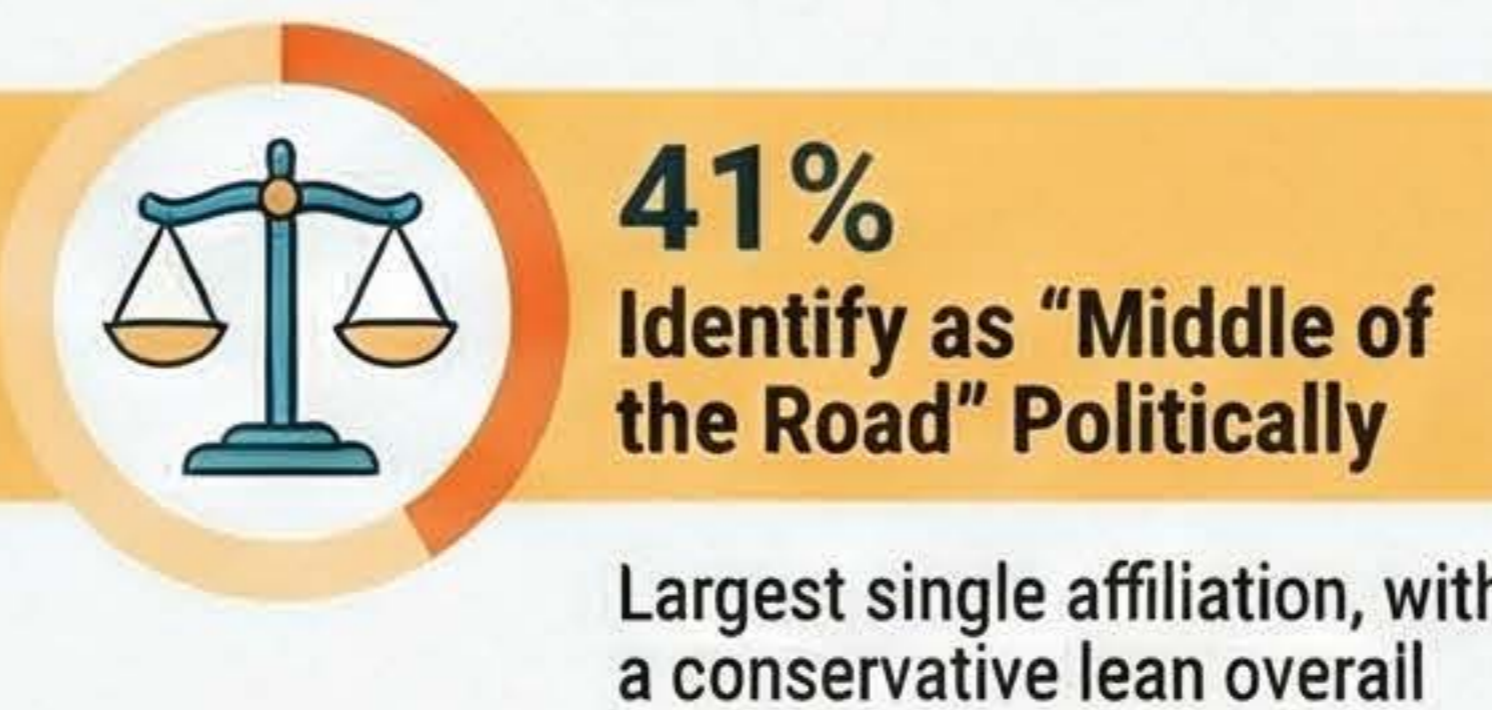
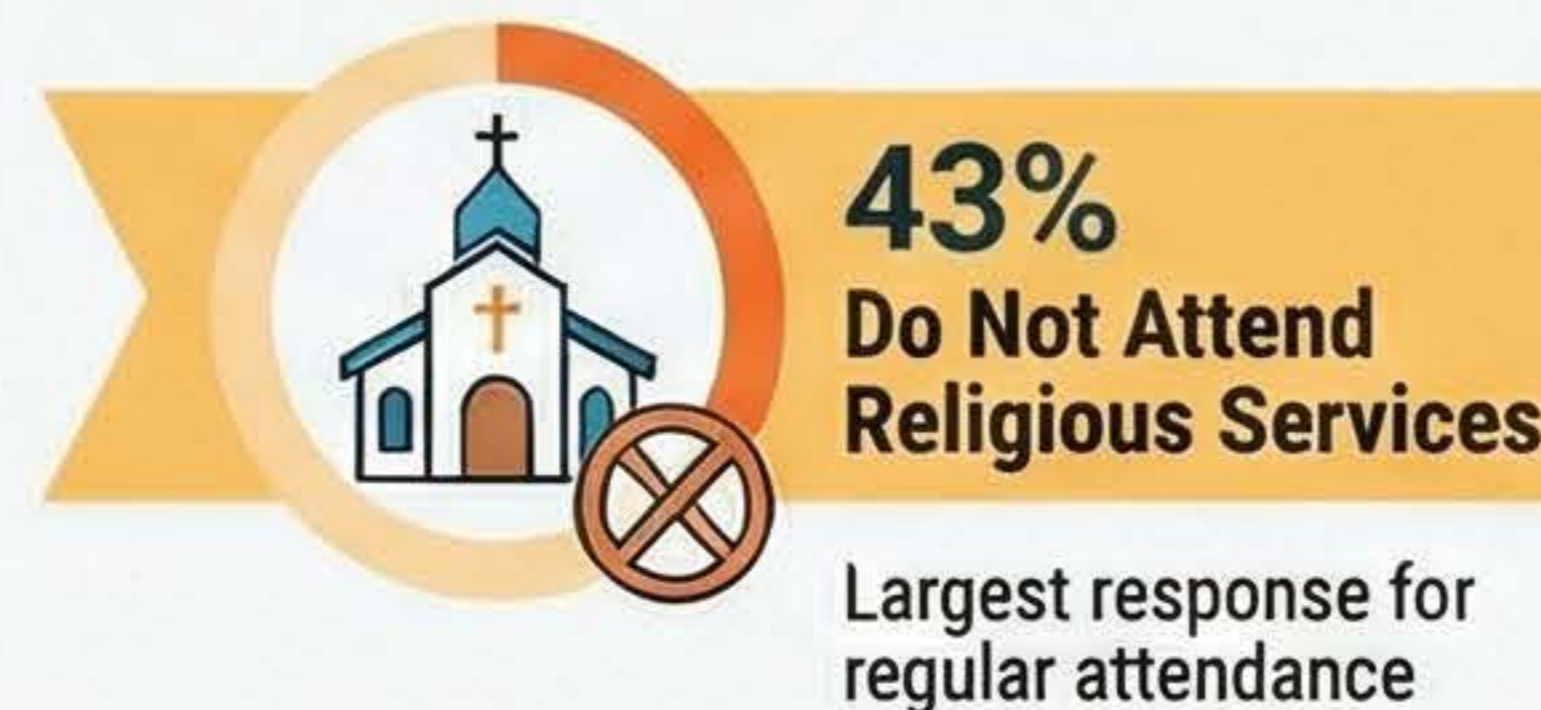
Primarily a White-Collar Workforce



Modest Household Incomes



Lifestyle & Beliefs



Top Community Segments are Rural & Traditional

